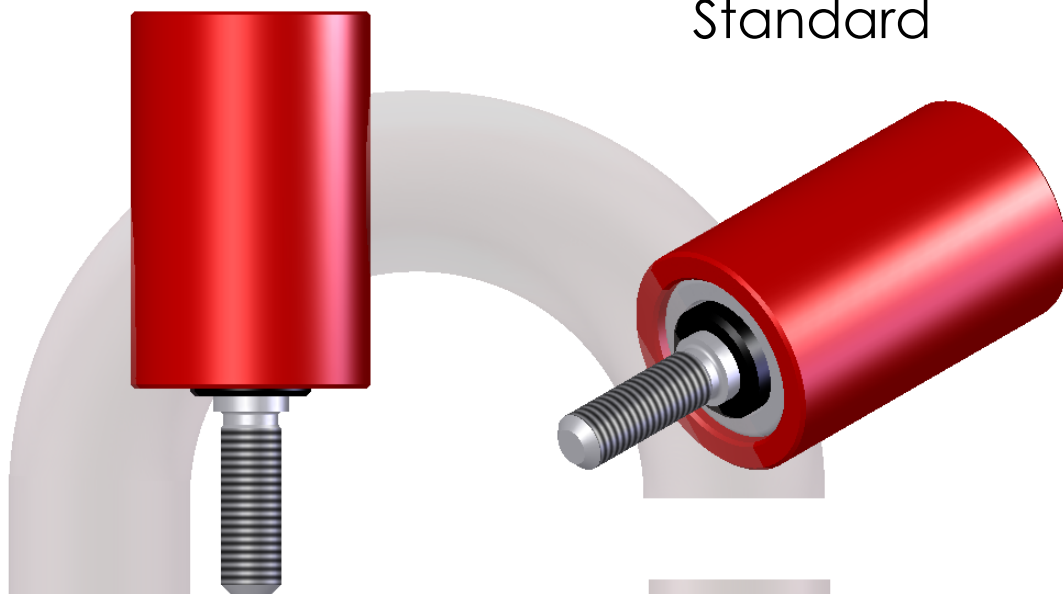


## F"uhrungsrollen-Typ FR 01 Standard



Artikel Nr.-	Abmessung	Gewinde	Rohrwand
11038-83	63,5x100	M16x50	10mm
11050-82	63,5x100	M20x45	10mm
12023-82B	63,5x130	M16x50	10mm
12023-82	63,5x130	M20x45	10mm
12016-82A	63,5x150	M16x50	10mm
12017-82A	63,5x150	M20x45	10mm
11042-82A	63,5x200	M16x50	10mm
11042-82	63,5x200	M20x45	10mm

Alle Ma"e in mm

©jachmann GmbH F"ordertechnik